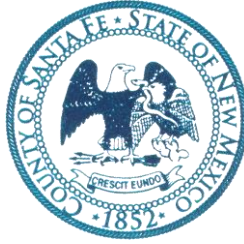


Henry P. Roybal
Commissioner, District 1

Anna Hansen
Commissioner, District 2

Robert A. Anaya
Commissioner, District 3



Anna T. Hamilton
Commissioner, District 4

Ed Moreno
Commissioner, District 5

Katherine Miller
County Manager

February 27, 2018

CONSTRUCTION OF THE HWY 14 SENIOR/COMMUNITY CENTER

IFB#2018-0238-PW/IC

ADDENDUM No. 2

Dear Bidders,

This addendum is issued to reflect the following immediately. It shall be the responsibility of the interested bidder to adhere to any changes or revisions to the IFB as identified in this Addendum No. 2. This documentation shall become permanent and made part of the departmental files.

The Deadline to submit bids is March 9, 2018 at 2:00PM at the Purchasing Division located at 142 W. Palace Ave, 2nd floor, Santa Fe, NM 87501. Please note the office is closed daily from 12-1 pm for the lunch hour, bids will not be accepted during this time.

As a reminder, bids will ONLY be accepted from Contractors that attended the Mandatory pre-bid meeting and site visits on February 2, 2018.

BIDDER QUESTIONS (NOTE THAT SOME BIDDER QUESTIONS ARE ADDRESSED IN SPECIFICATION AND DRAWING SECTIONS, BELOW; ALSO BIDDER QUESTIONS MAY BE PARAPHRASED)

****ADD ALTERNATE NO. 5 (Item F on the revised bid sheet attached) has been added for solar Pole and Bollard lights in the parking lot as opposed to the hard wired system currently included in the base bid. Please see updated A1.0- Site Plan & A1.2- Floor Plan Alternates with clouded alternate (attached). ****

Question 1: Please provide a location for the Primary transformer that is going to power the Senior Center.

Response 1: Please refer to A1.0 Site Plan for this information.

Question 2: Please provide a location for the Primary Telephone Pedestal? will local provider make the connection at the building or at the pedestal at property line?

Response 2: It will be by the street and at the property line. Coordinate with CenturyLink. See A1.0 Site Plan.

Question 3: Is The Fire Alarm going to be included in base bid on this project?

Response 3: Base bid includes wiring and conduit but County will have a sub-contractor install.

Question 4: Is the voice/Data system going to be included in the base bid?

Response 4: Base bid includes wiring and conduit but County will have a sub-contractor install.

Question 5: Please provide the Conduit size from the exterior telephone box to the interior telephone/data board?

Response 5: 2 inch conduit.

Question 6: Communications riser diagram shows a connection to satellite dish, please provide a location for the Dish as well as a conduit size between the dish and Telecom board.

Response 6: 2 inch conduit. Coordinate with Satellite installer. Most installers want a southern location but it is up to them. We cannot pick the locations as it depends on their satellites.

Question 7: Will local provider make connection from the dish to telecom board?

Response 7: Yes.

Question 8: Will kitchen equipment require means of disconnect? Plans call for 250 v receptacles.

Response 8: See Kitchen supplier drawings for controller of hood/fan and fire system. See Kitchen supplier drawings for utility matrix. See E4.1, Keyed Note #1. Contractors responsible for coordination.

Question 9: Will Type H exterior fixtures be controlled off a time clock, photocell, switch?

Response 9: See E5.1, 'Lighting Time Clock Control Diagram'.

Question 10: Will MC cable be allowed to use on this project?

Response 10: Bid as noted on drawings and Specifications.

Question 11: The drapes are called to be electronically operated but not power is shown to them.

Response 11: The J-Boxes for the window shades are for quantities. Contractor required to coordinate with manufacture requirements of shades submitted. See E1.2

Question 12: The recess for the drapes may be too small (4x4), it is recommend to have a 6x6 recess opening. Please verify this spec is correct.

Response 12: This space is adequate. The rough opening is actually 5x5. Please carefully review drawings.

Question 13: Contractors are not able to locate the pole lights on the light schedule, please clarify/verify where this information can be found.

Response 13: Pole lights are clearly indicated on E0.2, Keyed as "M".

Question 14: Clarification for Deductive Alternate referred to on 012300-2 was not on the bid sheet.

Response 14: This deductive alternate is no longer in the scope of work so it was not included on the bid sheet.

Question 15: On page E5.1 of the drawings it shows the electrical riser diagram. The diagram gives no information direction on the primary and secondary feeders for the utility transformer. Where will the service be coming from? What feeder will be required to the utility transformer? And what will be required for the secondary feeder to the main disconnect at the building?

Response 15: The primary feeder is up to PNM. The secondary is the Symbol 'A', which is (2)3-#400 AL. This conductor is technically one pull from the transformer through the CT enclosure and disconnect.

Question 16: In regards to the light gauge metal frame, drywall & exterior sheathing for this project. The architectural pages refer you to the structural pages to call out the type of exterior sheathing. Per structural page S1.1 General note #8, all exterior walls are sheathed with 1/2" APA rated OSB sheathing. The specs section 061600- Sheathing, it is requiring all wood panel products to be FSC certified. The specs also note that all plywood is to be treated unless otherwise indicated. Please clarify as to (1) whether the OSB @ the exterior walls has to be FSC certified (which is all very special order & expensive) (2) weather or not the OSB has to be fire treated (which is also very special order/must be ordered in units) (3) Whether the structural plywood @ the shear walls must be FSC certified & fire treated (which is very very special order, extremely expensive & must be ordered in units).

Response 16: In Spec Section 061600, Part 2 – Products, all FSC requirement language is to be removed. Comply with all other product specifications.

Please add this Addendum #2 to the original bid documents and refer to bid documents, hereto as such. This and all subsequent addenda will become part of any resulting contract documents and have effects as if original issued. All other unaffected sections will have their original interpretation and remain in full force and effect.

Proponents are reminded that any questions or need for clarification must be addressed to Iris Cordova, Senior Procurement Specialist at icordova@santafecountynm.gov.

****REVISED****
BID SHEETS

IFB# 2018-0238-PW/IC
HIGHWAY 14 SENIOR/COMMUNITY CENTER CONSTRUCTION

Please offer your best price for the work required to construct a new senior/community center in Cerrillos, NM. The lump sum base bid must include pricing for materials, equipment, labor, travel, and fees for any required permitting. Be advised that award may be made without discussion with bidders on offers received.

Item **Description**

A. Construction of the highway 14 Senior/Community Center.

Lump Sum Base Bid: _____

Written in Words (Base Bid): _____

B. Add Alternate No. 1 shed roof over the loading dock.

Bid: _____

Written in Words: _____

C. Add Alternate No. 2 wood casework and cabinetry along North wall of Senior Dining.

Bid: _____

Written in Words: _____

D. Add Alternate No.3 15 electronically operated awning windows.

Bid: _____

Written in Words: _____

E. Add Alternate No. 4 Add 4” asphalt layer to the service driveway parking lot.

Bid: _____

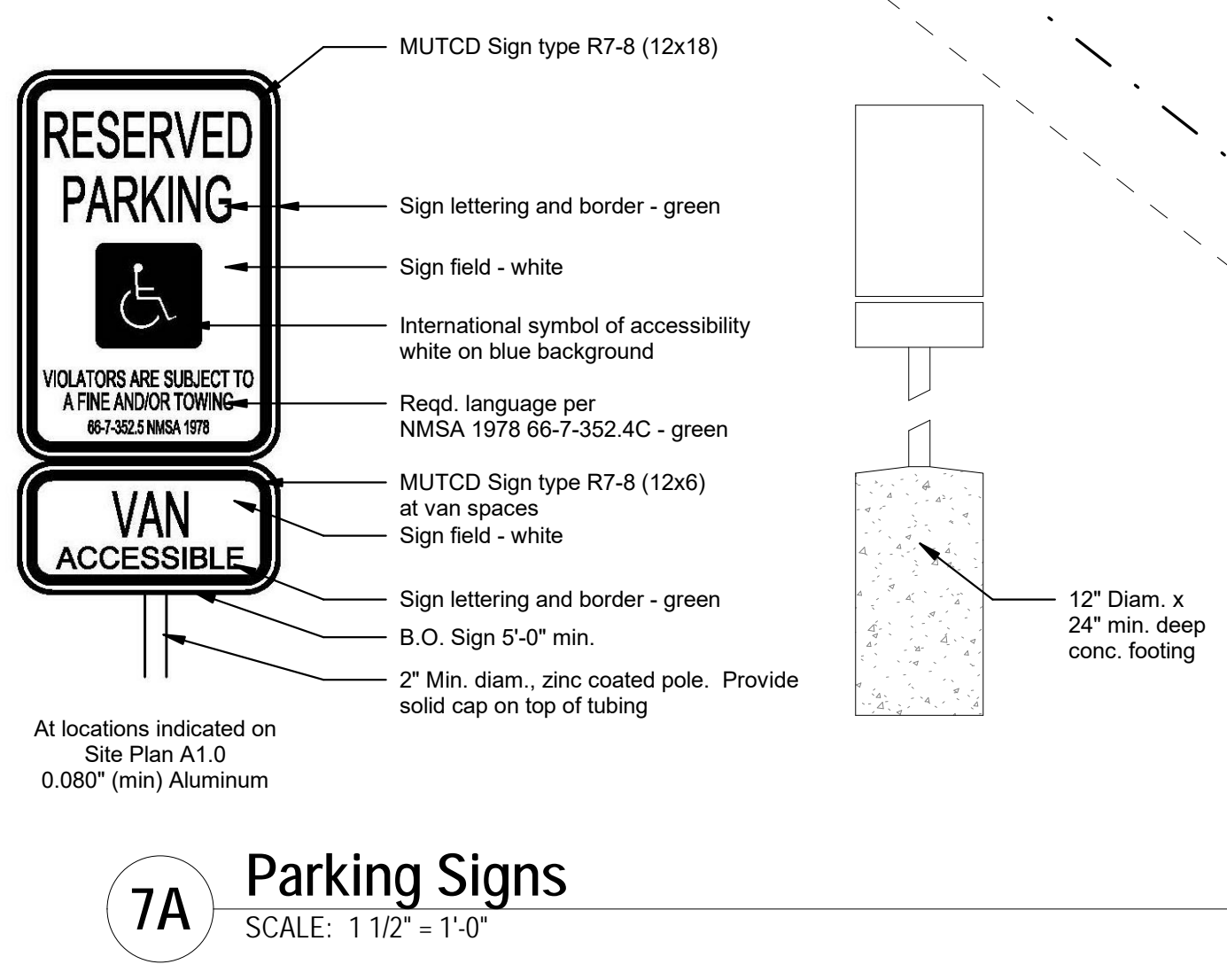
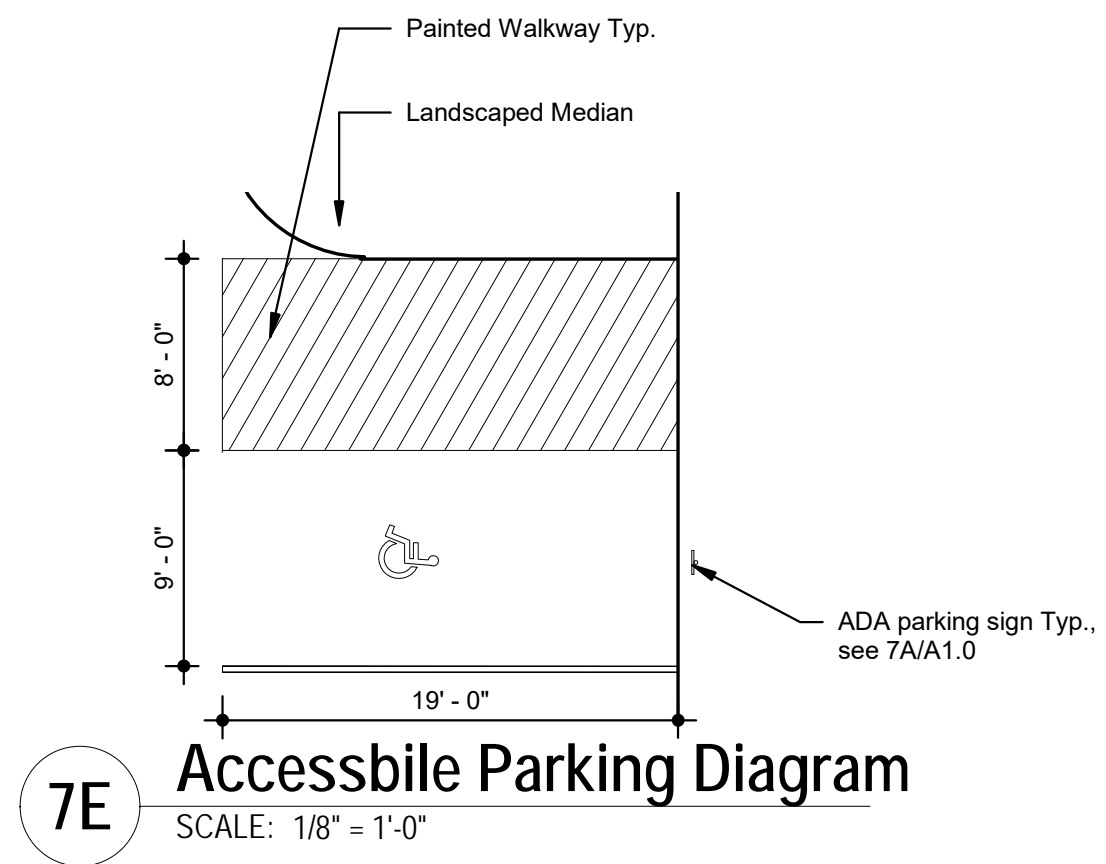
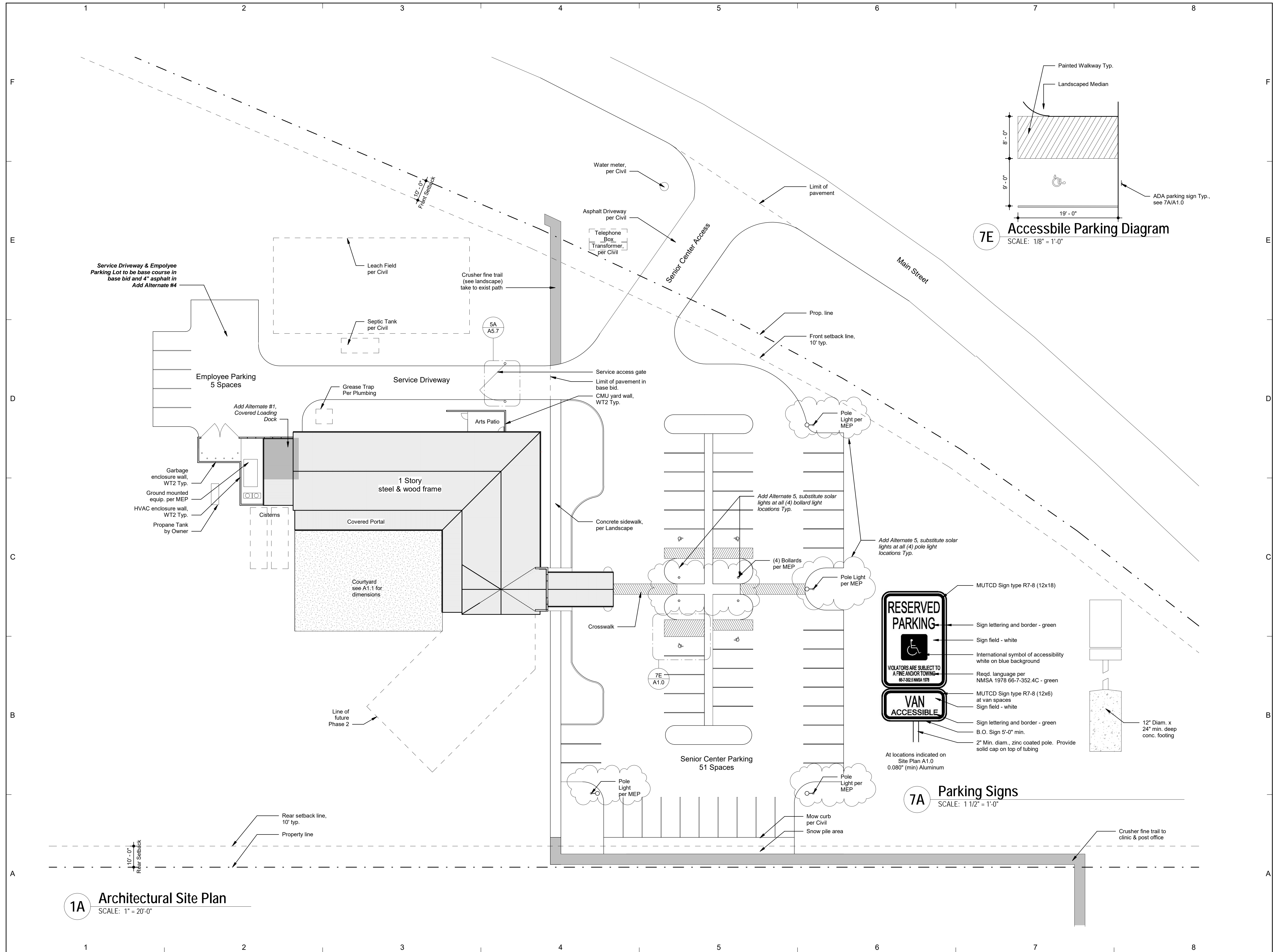
Written in Words: _____

F. Add Alternate No. 5 Add solar Pole and Bollard lights in the parking lot.

Bid: _____

Written in Words: _____

NOTE: LUMP SUM BASE BID AND ALTERNATE BID PRICING IS EXCLUSIVE OF GROSS RECEIPTS TAX (GRT).



1A Architectural Site Plan
SCALE: 1" = 20'-0"

7E Accessible Parking Diagram
SCALE: 1/8" = 1'-0"

7A Parking Signs
SCALE: 1 1/2" = 1'-0"

STATE OF NEW MEXICO
Alexander C. Dzirec
NO. 003942
11/29/17
REGISTERED ARCHITECT

autotroph
architecture.planning.sustainable design consulting

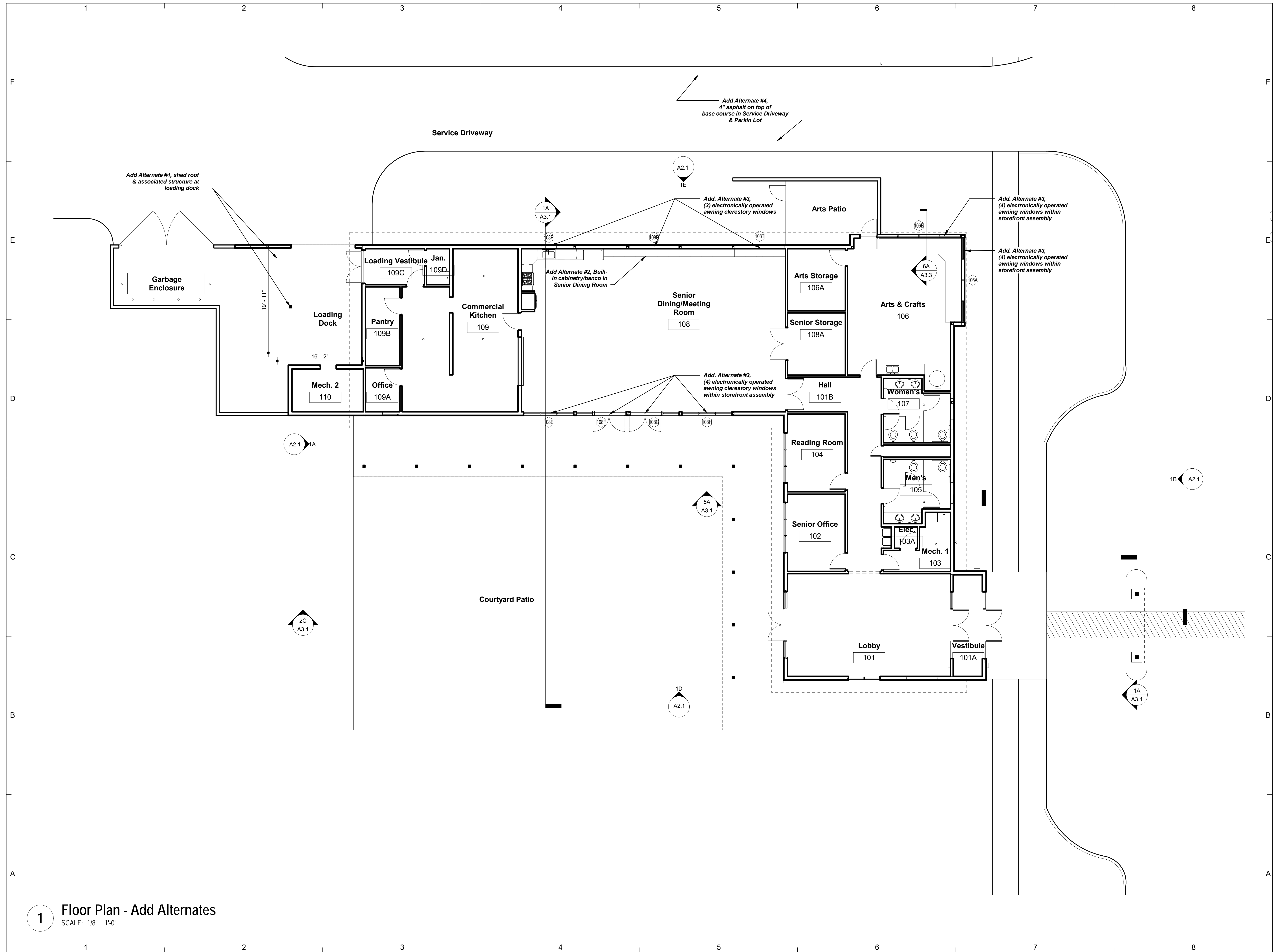
No.	Description	Date
1	Revision 1	Date 1

Hwy 14 Senior Center

Architectural Site Plan

Project Number	1606
Date	10.20.17
Drawn By	LMB
Checked By	AD

A1.0



ADDITIVE ALTERNATES:

Additive Alternate #1:
Shed roof over Loading Dock in Service Area. Wd. Post, beams and associated foundation.

Additive Alternate #2:
Casework and cabinetry along North wall of Senior Dining. See A4.3 for details.

Additive Alternate #3:
(15) Electronically operated awning windows. See A4.2 for locations in Arts Center. See 1B & 1E/A2.1 - Elevations for locations of operable awning windows in Senior Dining. Basis of design: see mechanical specs.

Additive Alternate #4:
Replace 4" asphalt in service driveway and parking lot with base course & gravel.

Additive Alternate #5:
Substitute solar powered Pole and Bollard lights in the parking lot and delete any hardwiring required for the lights specified in the Base Bid.

STATE OF NEW MEXICO
Alexander C. Dzurec
NO. 003942
11/29/17
REGISTERED ARCHITECT

autotroph
architecture.planning.sustainable design consulting

No.	Description	Date
1	Revision 1	Date 1

Hwy 14 Senior Center

Floor Plan - Alternates

Project Number	1606
Date	10.20.17
Drawn By	Author
Checked By	Checker

A1.2

1 Floor Plan - Add Alternates
SCALE: 1/8" = 1'-0"